



# BROOK GAMBLE



## 1 Short Brow Close , Eastbourne, BN22 0QX

Occupying a large corner plot, this 2 bedroom semi-detached bungalow has been the subject of much improvement by the current owner. The bungalow, which is located on the popular Hamlands Estate in Lower Willingdon, enjoys the benefits of a large Lounge/Dining Room and Conservatory, along with the refitted Kitchen and Bathroom. With gardens to 3 sides, the bungalow also benefits from a driveway and garage as well as views to the South Downs. The bungalow is located close to the local Freshwater Square shopping precinct and nearby bus services in and out of Eastbourne and surrounds. Being offered to the market chain free, viewing is considered essential. Sole Agents.

**£299,950**

# 1 Short Brow Close

, Eastbourne, BN22 0QX



- Large Corner Plot
- Gardens To 3 Sides
- Driveway And Garage
- Sole Agents
- Views To South Downs
- Conservators
- Close Shops And Bus Routes
- Modernised By Present Owner
- Gas Central Heating
- Chain Free

## Lounge / Dining Room

20'9 x 14'3 max reducing to 11'8  
(6.32m x 4.34m max reducing to  
3.56m)

## Conservatory

16'11 x 11 (5.16m x 3.35m)

## Inner Hallway

## Kitchen

11'9 x 6'4 (3.58m x 1.93m)

## Bedroom 1

10'10 x 9'8 (3.30m x 2.95m)

## Bedroom 2

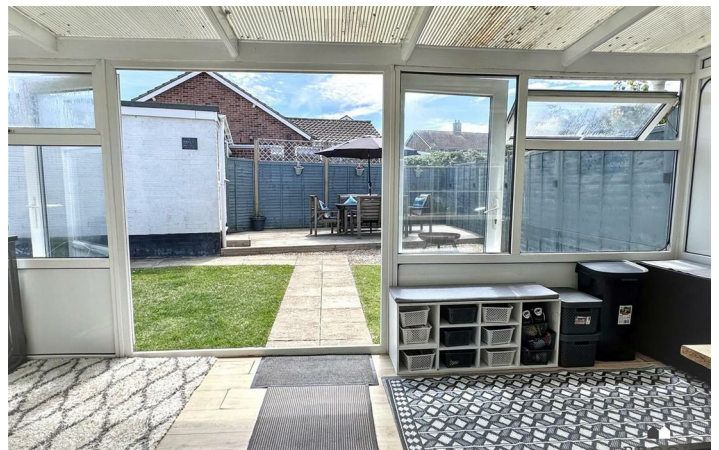
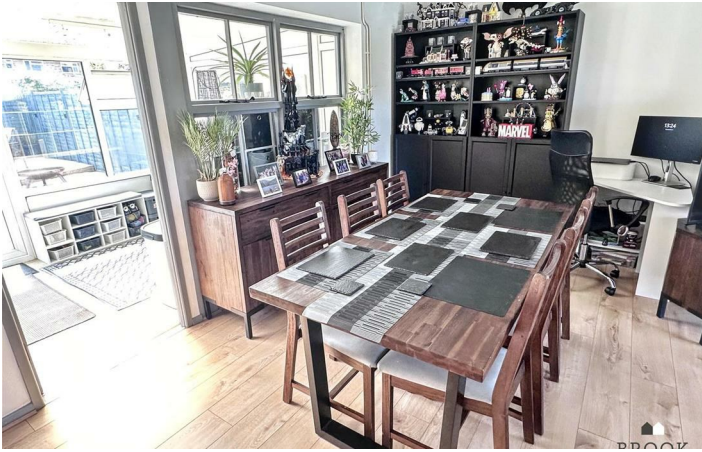
11' x 7'10 (3.35m x 2.39m)

## Bathroom

## Outside



## Directions





# Floor Plan

These particulars, whilst believed to be accurate are set out as a general outline only for guidance and do not constitute any part of an offer or contract. Intending purchasers should not rely on them as statements of representation of fact, but must satisfy themselves by inspection or otherwise as to their accuracy. No person in this firm's employment has the authority to make or give any representation or warranty in respect of the property.

